

1

2

3

4

A

A

B

B

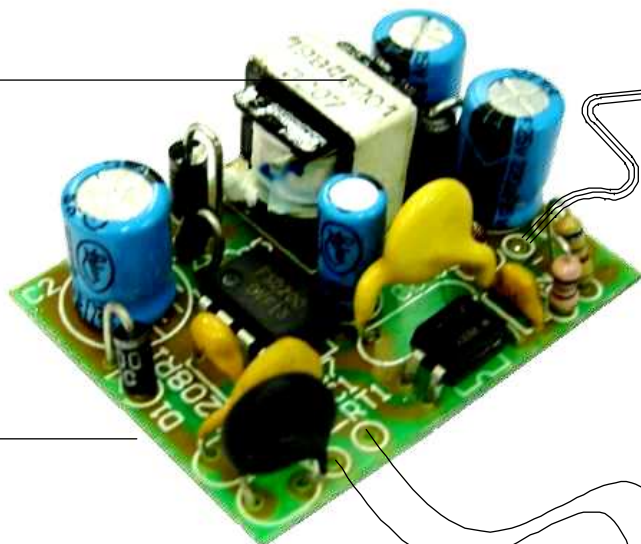
C

C

D

D

BR (+) PR (-) SAÍDA
12VDC / 150mA

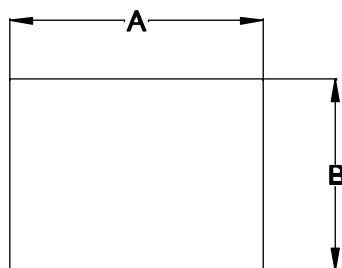


ENTRADA
100 ~ 240VAC


AZ
AZ

COMPRIMENTO DOS CABOS COM 150mm ±5mm

DIMENSÕES EM: [mm]
TOLERÂNCIA GERAL: ±0,5mm



A	B	C
41.5	31.5	16.0

 TECNOTRAFO		DOC. Nº	108
DIAGRAMA DE LIGAÇÃO			
CLIENTE	TECNOTRAFO		CODIGO 134.291.01
DESCRIÇÃO	FORTE E 100 ~ 240VAC S 12VDC / 150mA		PLACA B-208 EMISSÃO 04
DATA:	AUTOR:	CONFERIDO:	
28/08/07	RAPHAEL		

1

2

3

4